



## ΑΝΑΣΚΟΠΗΣΗ ΚΕΝΤΡΟΥ ΕΜΠΕΙΡΟΓΝΩΜΟΣΥΝΗΣ ΓΙΑ ΣΠΑΝΙΕΣ ΣΠΕΙΡΑΜΑΤΟΠΑΘΕΙΕΣ

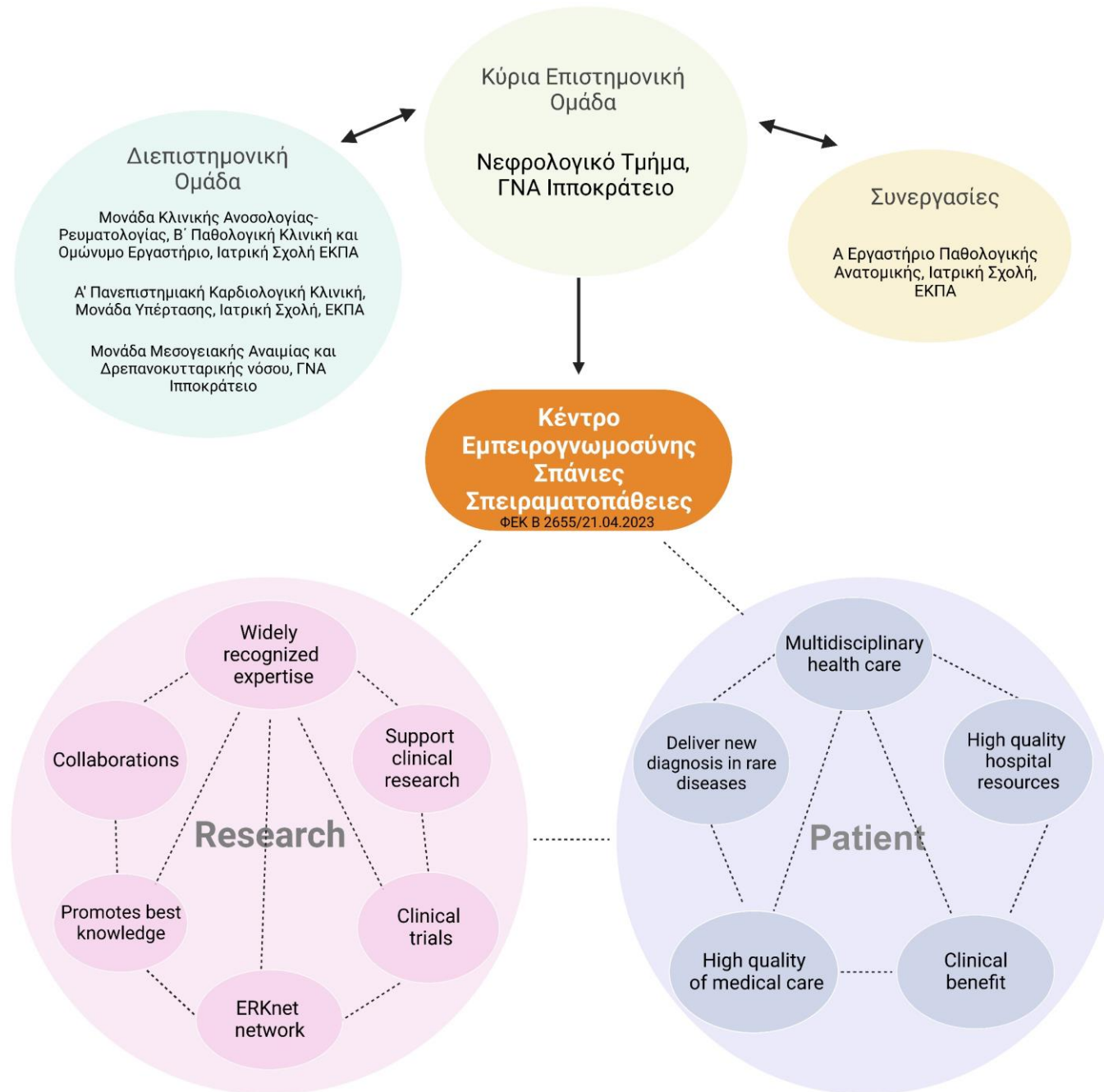
**Α. Χαλκιά**<sup>1</sup>, Ε. Σταθοπούλου<sup>1</sup>, Α. Παπράς<sup>1</sup>, Μ. Μπόρα<sup>1</sup>, Μ. Σταμπολλίου<sup>1</sup>, Π. Γιάννου<sup>1</sup>, Χ. Γακιοπούλου<sup>2</sup>, Κ. Τσιούφης<sup>3</sup>, Δ. Βασιλόπουλος<sup>4</sup>, Δ. Πετράς<sup>1</sup>

<sup>1</sup>Νεφρολογικό Τμήμα, ΓΝΑ Ιπποκράτειο, Αθήνα

<sup>2</sup>Α' Εργαστήριο Παθολογικής Ανατομικής Ιατρική Σχολή ΕΚΠΑ, Αθήνα

<sup>3</sup>Α' Πανεπιστημιακή Καρδιολογική Κλινική, Ιατρική Σχολή ΕΚΠΑ, ΓΝΑ Ιπποκράτειο, Αθήνα

<sup>4</sup>Μονάδα Κλινικής Ανοσολογίας-Ρευματολογίας, Β' Παθολογική Κλινική και Ομώνυμο Εργαστήριο, Ιατρική Σχολή ΕΚΠΑ, Γ.Ν.Α Ιπποκράτειο, Αθήνα



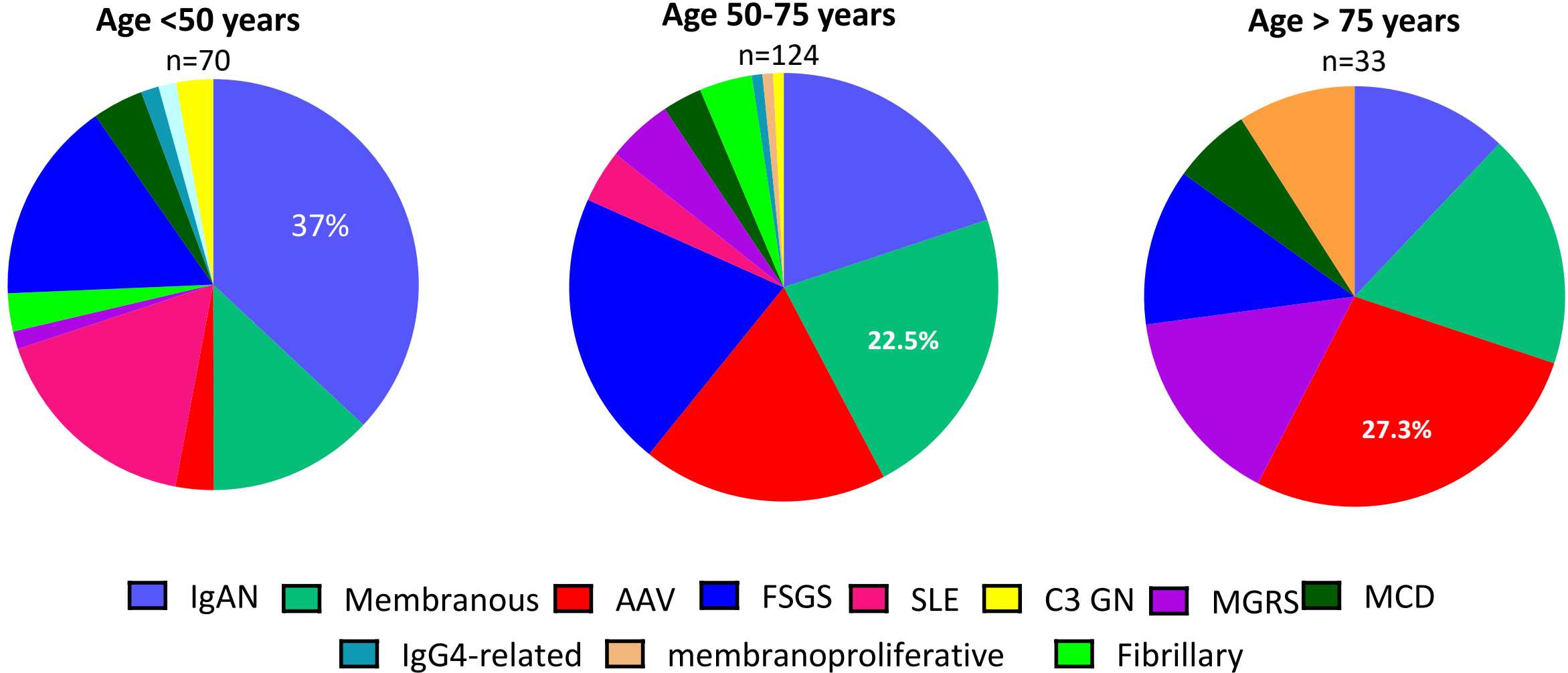
# Study Design

- Retrospective, observational study
- Single-centre (multidisciplinary team)
- **Inclusion Criteria:**
  - Patients with biopsy-proven glomerulonephritis
  - Active follow-up during **January 2018- December 2023**

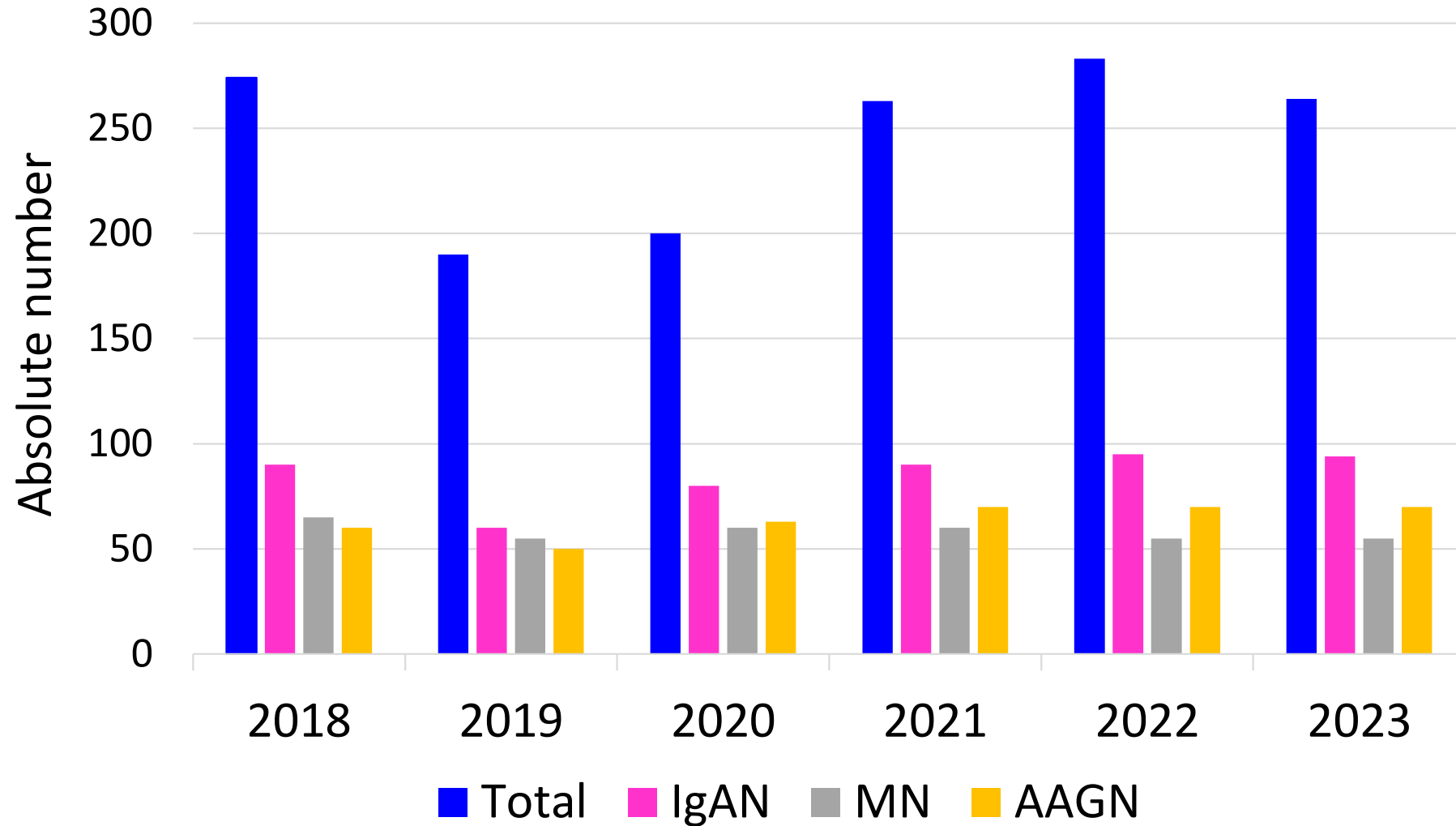
# Results

<b>Patients, (n)</b>	<b>251</b>
Age (years), mean $\pm$ SD	57 $\pm$ 16
Female, %	38%

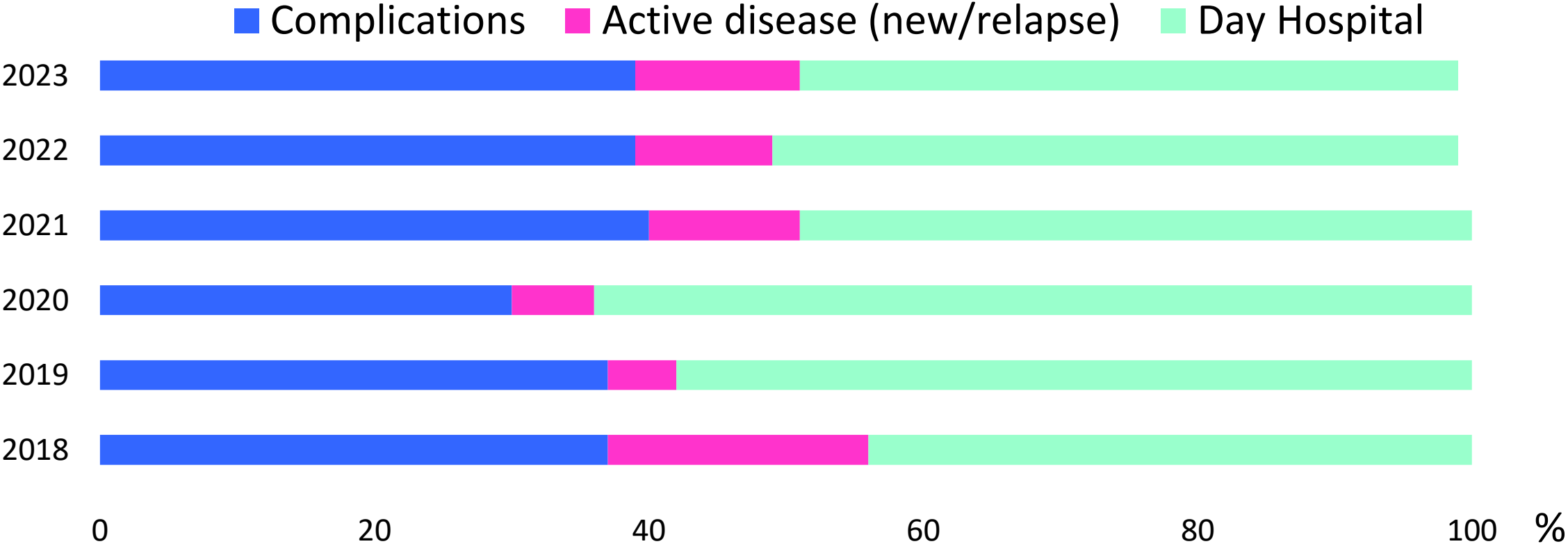
# Glomerular Diseases per Age group



# Hospitalizations

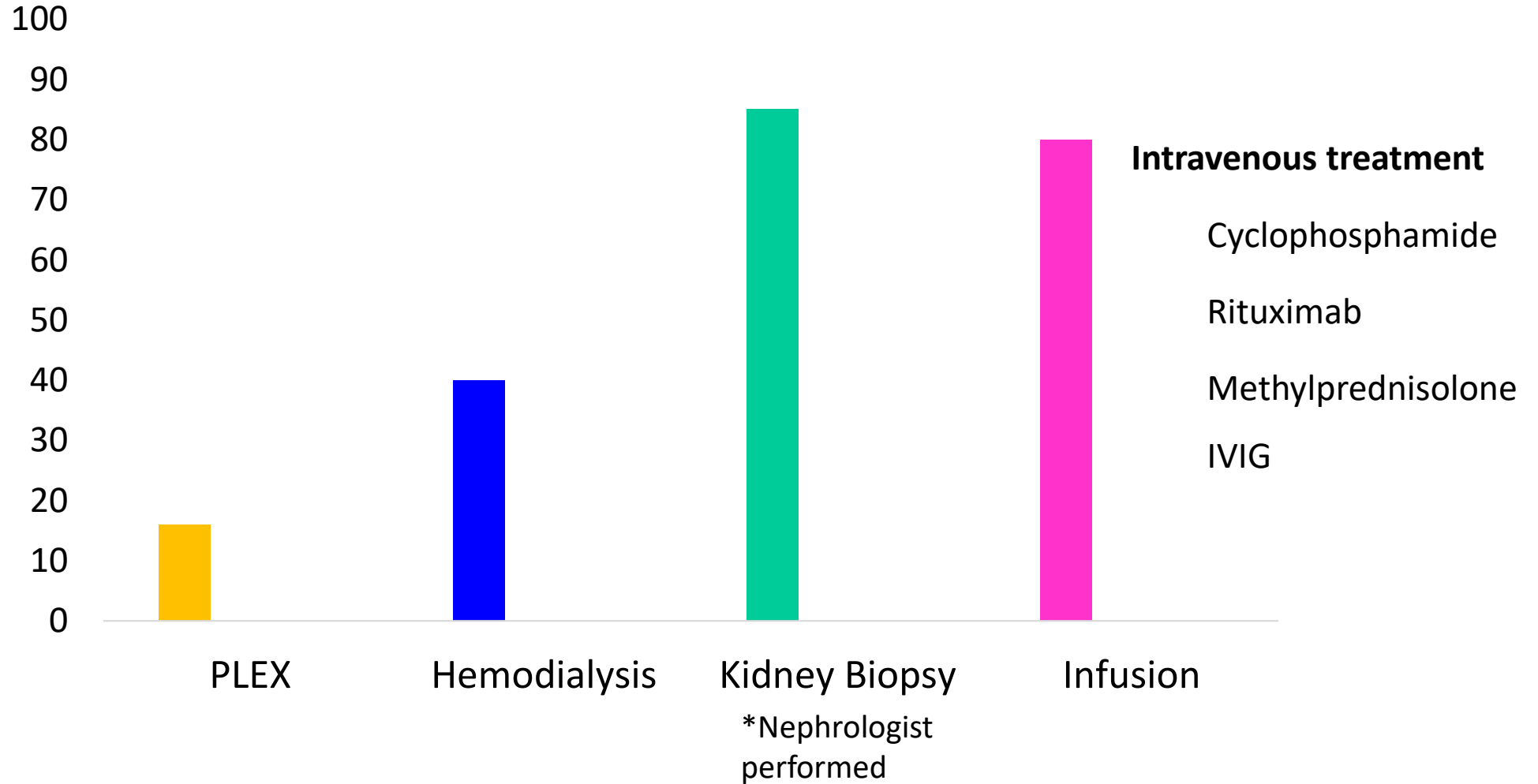


# Reason of Hospitalization



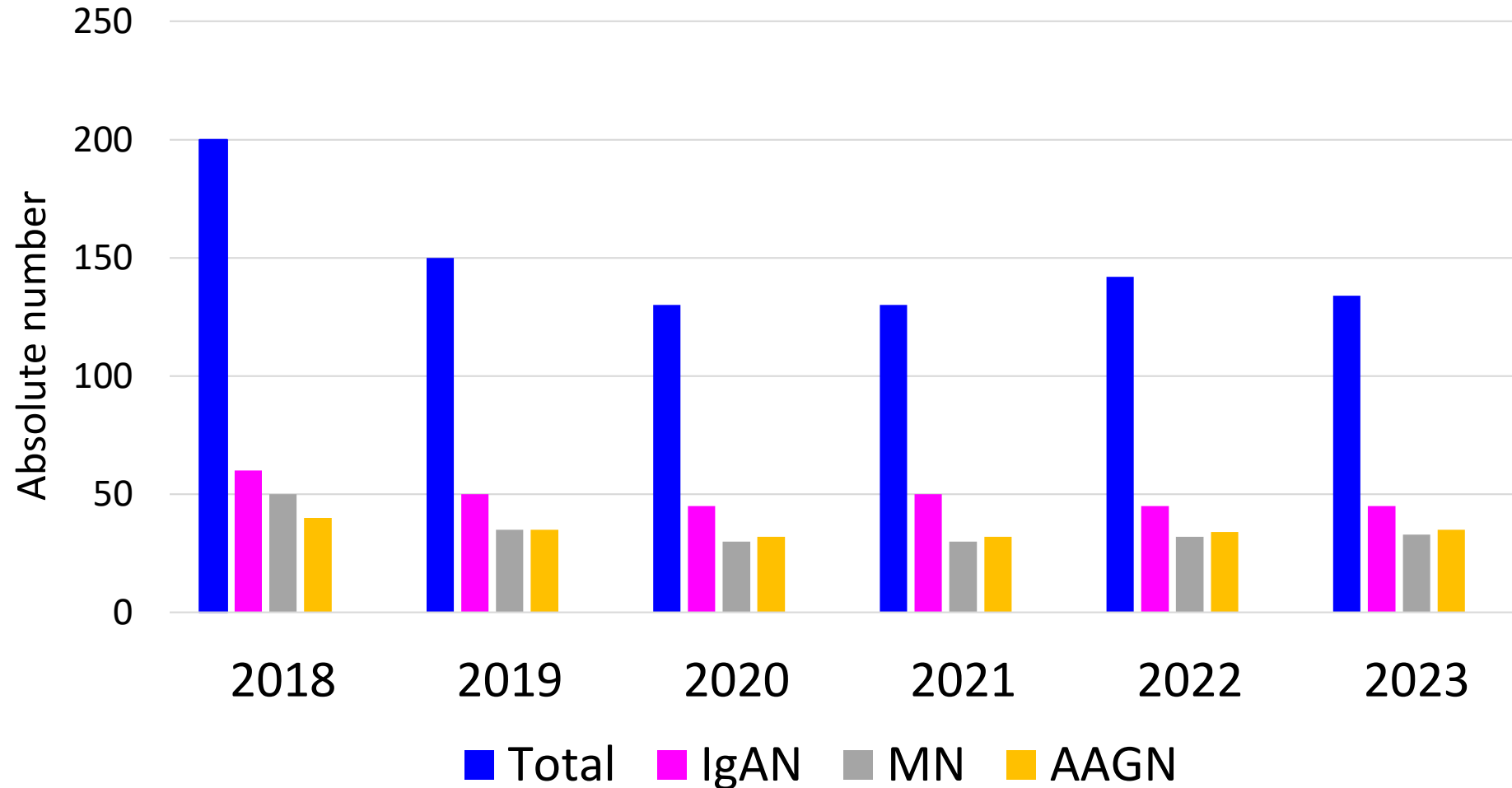
- Day Hospital: Assessment, infusions, blood test, Ct scans

# Hospital Resources



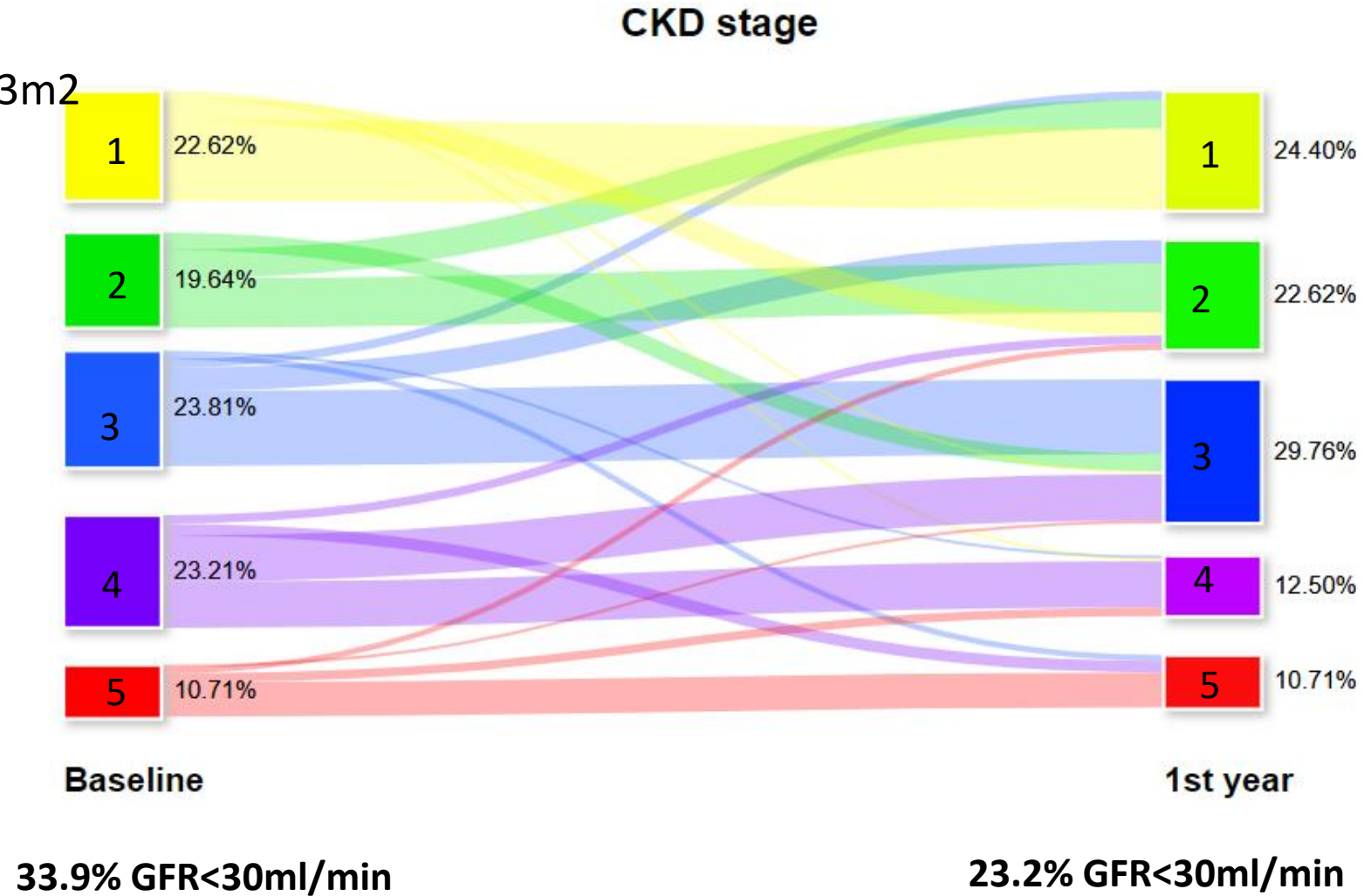
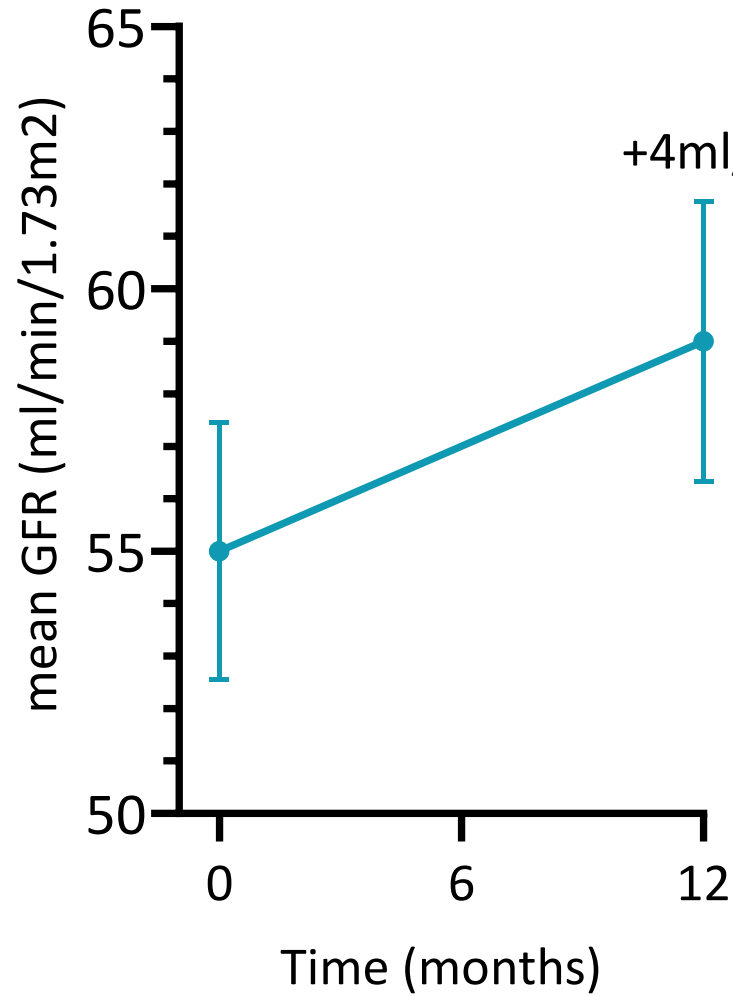


# Outpatient Clinic

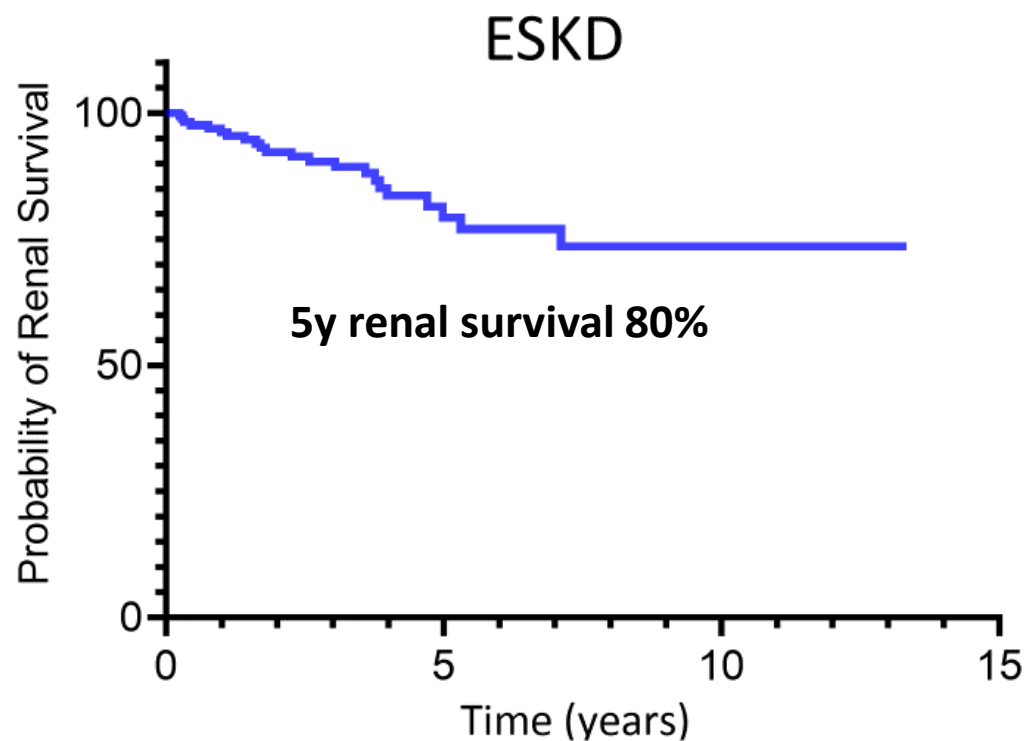


Median 3.25 visits per patient per year

# Renal Recovery at 1<sup>st</sup> year



# Long-Term Outcome



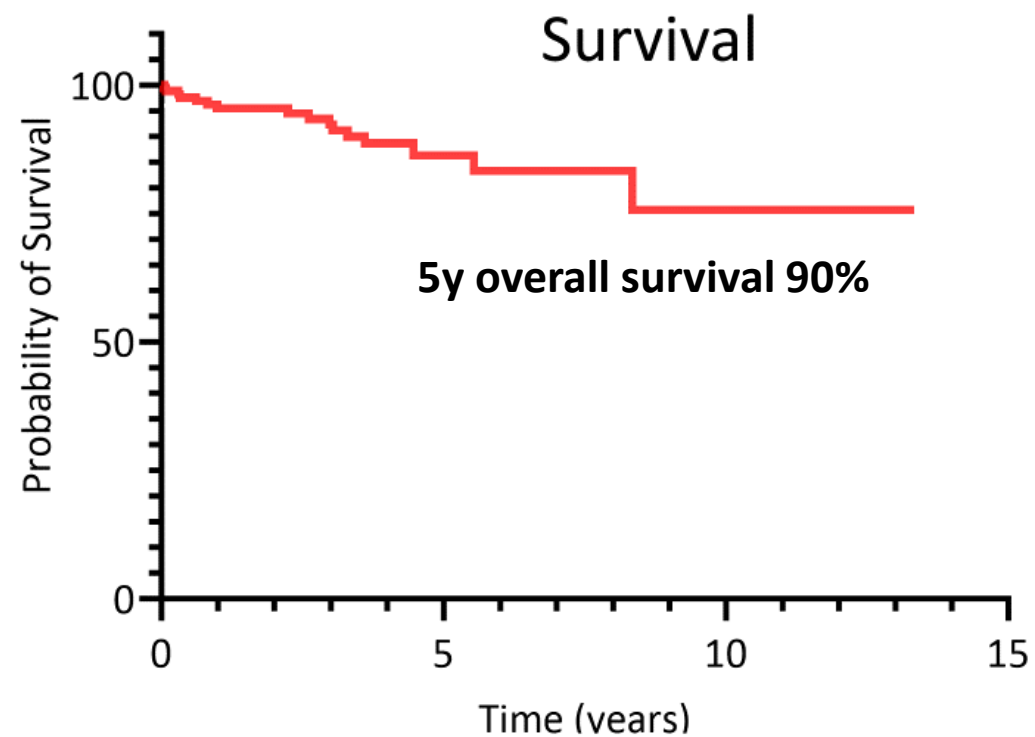
Numbers at risk

185

156

136

123



Numbers at risk

176

150

131

120

# Conclusions

- The patients with GN present an increased need for hospitalization and regular outpatient visits.
- In addition to the medical treatment, the favourable outcome depends on a well-organized inpatient and outpatient service provided by a multidisciplinary team.



# Acknowledgements



HELLENIC REPUBLIC  
National and Kapodistrian  
University of Athens  
— EST. 1837 —

## Nephrologists

Dimitrios Petras

Aglaia Chalkia

Panagiota Giannou

Athanasia Kapota

Pinelopi Kouki

Georgios Aggelis

Zoe Alexakou

Margarita Bora

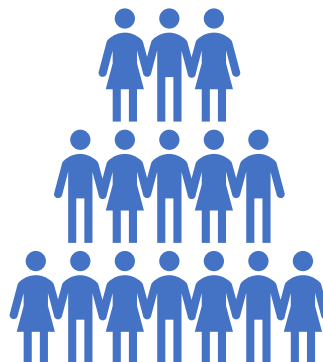
Martha Mitropoulou

Athanasios Papras

Anastasia Politi

Emelina Stambolliou

Elpiniki Stathopoulou



## Rheumatologists

Dimitrios Vassilopoulos

Christos Koutsianas

Christina Tsalapaki

## Cardiologist

Konstantinos Tsioufis

## Pathologist

Harikleia Gakiopoulou

## Hematologist

Sofia Delikou